

EZG Hogtrax®

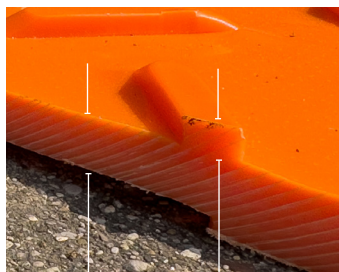
Get Maximum Traction with Minimal Impact.

Introducing EZG ground protection mats specifically engineered for large equipment use on susceptible surfaces. EZG Hogtrax features a robust diamond cleat over honeycomb dual-surface tread design for aggressive grip, while preventing ruts, and establishing stable pathways.

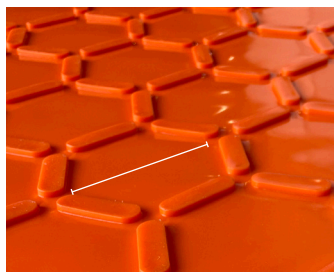
- Capable of supporting weights up to 120 tons* per mat.
- Four hand holds per mat for easy manual mobilization and positioning.
- High-density polyethylene material ensures resistance to rot, splintering, warping and breakage.
- Effortless multi-mat connectivity for assembling temporary roads or functional platforms.



Optional stainless steel connection clamps; item sold separately – GPM-SC



Thickness: 0.5" (13 mm)
Tead Depth: 0.273" (7 mm)



Honeycomb Tread Diameter: 4.25" (108 mm)

SPECIFICATIONS	GPM4x8
Dimensions	48" x 96" (1219 x 1438 mm)
Thickness	1/2 inch (13 mm)
Tread Depth	.273" (7 mm)- Diamond .149" (4 mm)- Honeycomb
Hand Holds	4 (centered on 4 sides)
Approx Area	32 sq.ft. (3 m ²)
Compressive Strength (5% strain)	2350 psi (16.2 MPa) @ 73.4°F (23°C)
Working Load*	120 tons (120,000 kg)
Weight	92 lbs. (42 kg)

* load limit based on application



1-800-417-9272 / ezgmfg.com / sales@ezgmfg.com
1833 N. Riverview Road, Malta, Ohio 43758

EZG Manufacturing is a division of EZ Grout Corporation. All EZG Manufacturing products are backed by our **two-year warranty** on parts unless otherwise stated and are now available for order.

