

# DIAMOND<sup>®</sup> 9D

## RETAINING WALL

A LIGHTWEIGHT SOLUTION FOR SEGMENTAL RETAINING WALLS WITH A WEATHERED STONE LOOK



**BELGARD**  
PAVES THE WAY<sup>™</sup>



DEVELOPED BY  
**ANCHOR**  
DIAMOND  
WALL INDUSTRY EXPERTS





# DIAMOND<sup>®</sup> 9D

## RETAINING WALL

A LIGHTWEIGHT SOLUTION FOR SEGMENTAL RETAINING WALLS WITH A WEATHERED STONE LOOK

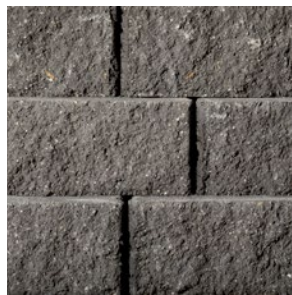
### ☑ FEATURES & BENEFITS

- All system components are standard-split in-line
- Rear lip locators easily establish a uniform wall batter
- A matching cap and corner completes the system
- Build gravity walls up to 3 feet high\*, including the buried course.
- Taller walls can be built using geosynthetic reinforcement when designed by a qualified engineer.
- Minimum outside radius, measured on the top course to the front of the units: 3 feet
- Minimum inside radius, measured on the base course to the front of the units: 6 feet
- The rear lip establishes a 1 1/8" setback for a 10.6 degree system batter

### 🔥 AVAILABLE COLORS



DANVILLE BEIGE



GRANITE GRAY



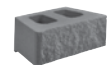
SABLE



SILEX BLEND

### 🧱 SHAPES & SIZES

#### STRAIGHT FACE



6 x 17 3/4 x 9

#### CAP



3 x 17 1/4 / 10 5/8 x 9

#### CORNER



6 x 18 x 9